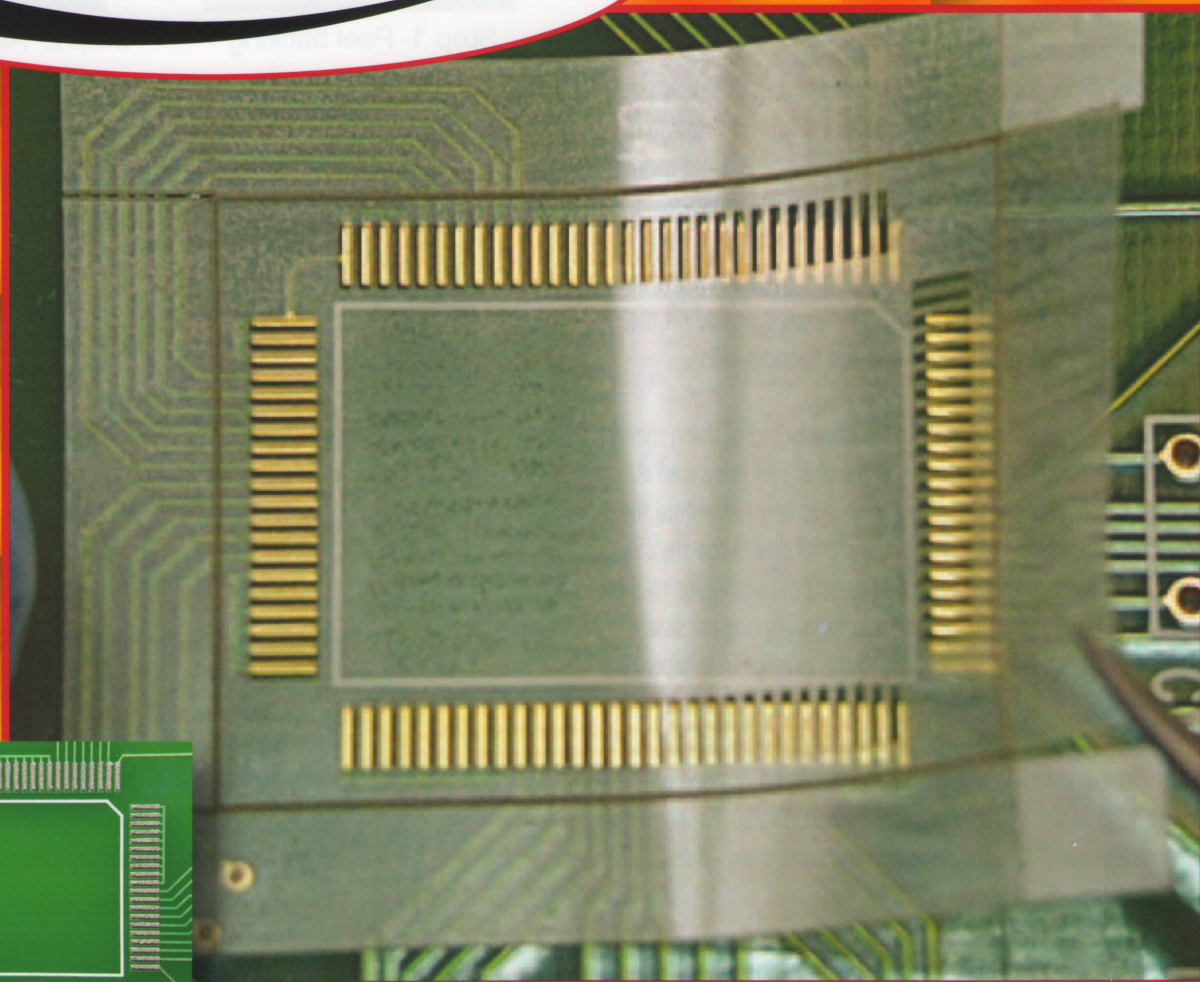


Rework Stencil

Faster, Simpler and More Reliable

StikNPeel™



StikNPeel™ - An easy method to paste print any rework location

BEST

3603 Edison Place • Rolling Meadows, IL 60008
v: 847.797.9250 • f: 847.797.9255

Your **BEST** choice in Solder Rework/Repair, Solder Training and Soldering Tools
www.solder.net



Fast, Reliable and Consistent Paste Printing

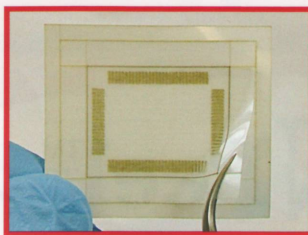
Tired of having to clean metal rework stencils between each print? Tired of cleaning up smeared solder paste because your PCB is warped or your stencil has moved during the rework printing process? Frustrated by the time/effort it takes to tape off areas in and around the areas to be reworked? **The BEST StikNPeel™ is your answer to these process problems.**

The StikNPeel™ process greatly simplifies the ability of a technician to selectively print solder paste onto various areas of a PCB. Simply peel off the backing, place the StikNPeel™ stencil onto the PCB sliding it on/around until the apertures are aligned over the pads. Once aligned, solder paste is then rolled in to the apertures of the stencil as many times as necessary—there is no smearing because it is held in place by the “sticky note” like adhesive. You can run the squeegee across the stencil face as many times as you want. The stencil is peeled off the PCB leaving very consistent solder paste in the aperture areas.

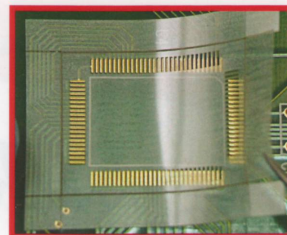
This rework process overcomes many of the headaches of using metal stencils. Firstly, coplanarity between board and stencil is assured due to the adhesive backing on the stencil. The adhesive helps eliminate the “smearing” of solder paste underneath the stencil due to the stencil movement. First pass yields are improved as you get numerous rolls of the solder paste back and forth into the apertures insuring consistent paste volume. Once the stencil is aligned and is pressed in to place it will not move. This insures consistent solder paste print patterns. The problem of devices being right up against the device being reworked is overcome with this stencil design as the stencil can be “flipped up” very close to the edge of the package being reworked. The built-in border of the stencil design eliminates the need for time-consuming “masking” in and around the area to be reworked.

The rework stencils are packaged and delivered to you the way you want. Stencils are custom made to your exact device requirements without expensive tooling. Simply send your select Gerber files, a dxf or part datasheet and we will take it from there. They are also packaged such that developers and those building PCB prototypes can use them in quantities which closely match their needs.

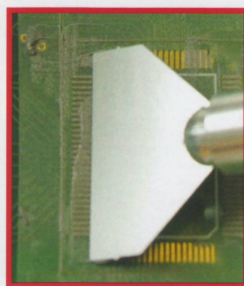
How the StikNPeel™ process works



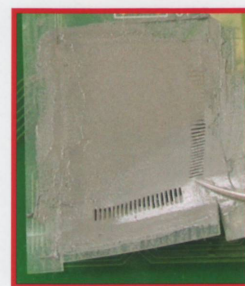
Step 1- Peel backing off the stencil



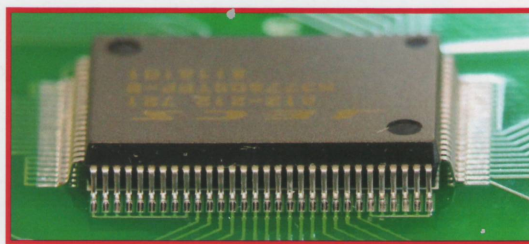
Step 2- Align and adhere stencil to PCB location



Step 3- Roll solder paste into apertures



Step 4- Pull stencil off, lifting stencil from PCB



Step 5- Place device, reflow, clean and inspect

Once you try these you will not go back to the obsolete metal rework stencils.

Your **BEST** choice in Solder Rework/Repair, Solder Training and Soldering Tools

www.solder.net

BEST

3603 Edison Place • Rolling Meadows, IL 60008
v: 847.797.9250 • f: 847.797.9255